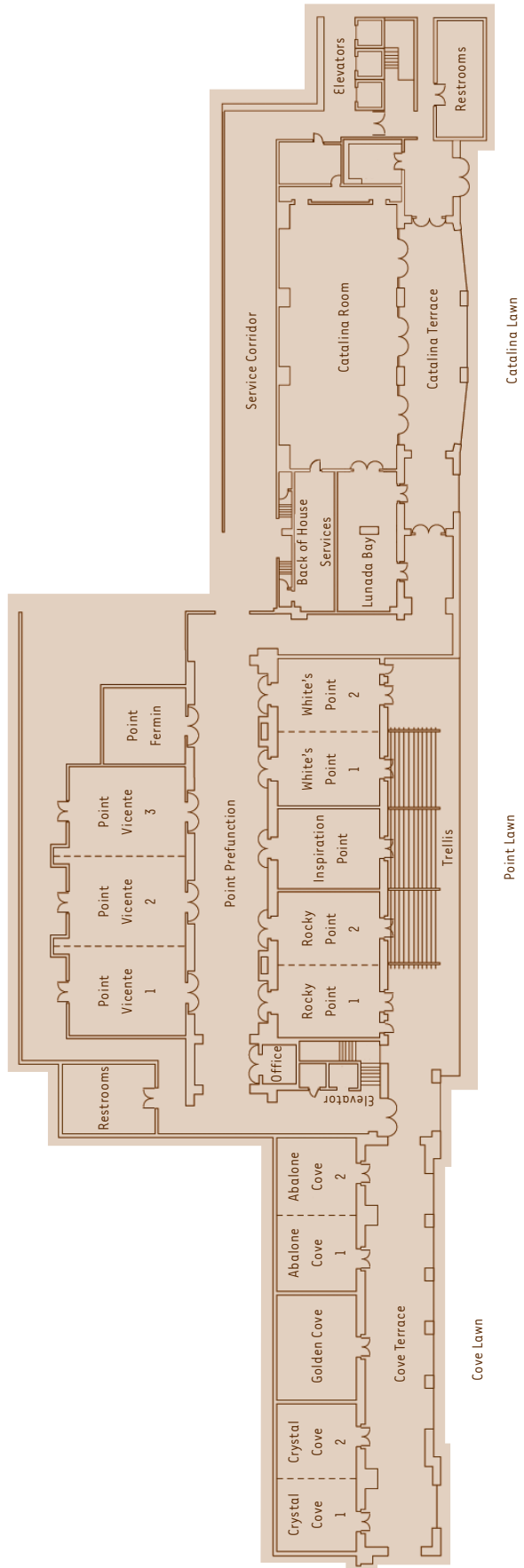


2ND
FLOOR

**MEETING
ROOMS**



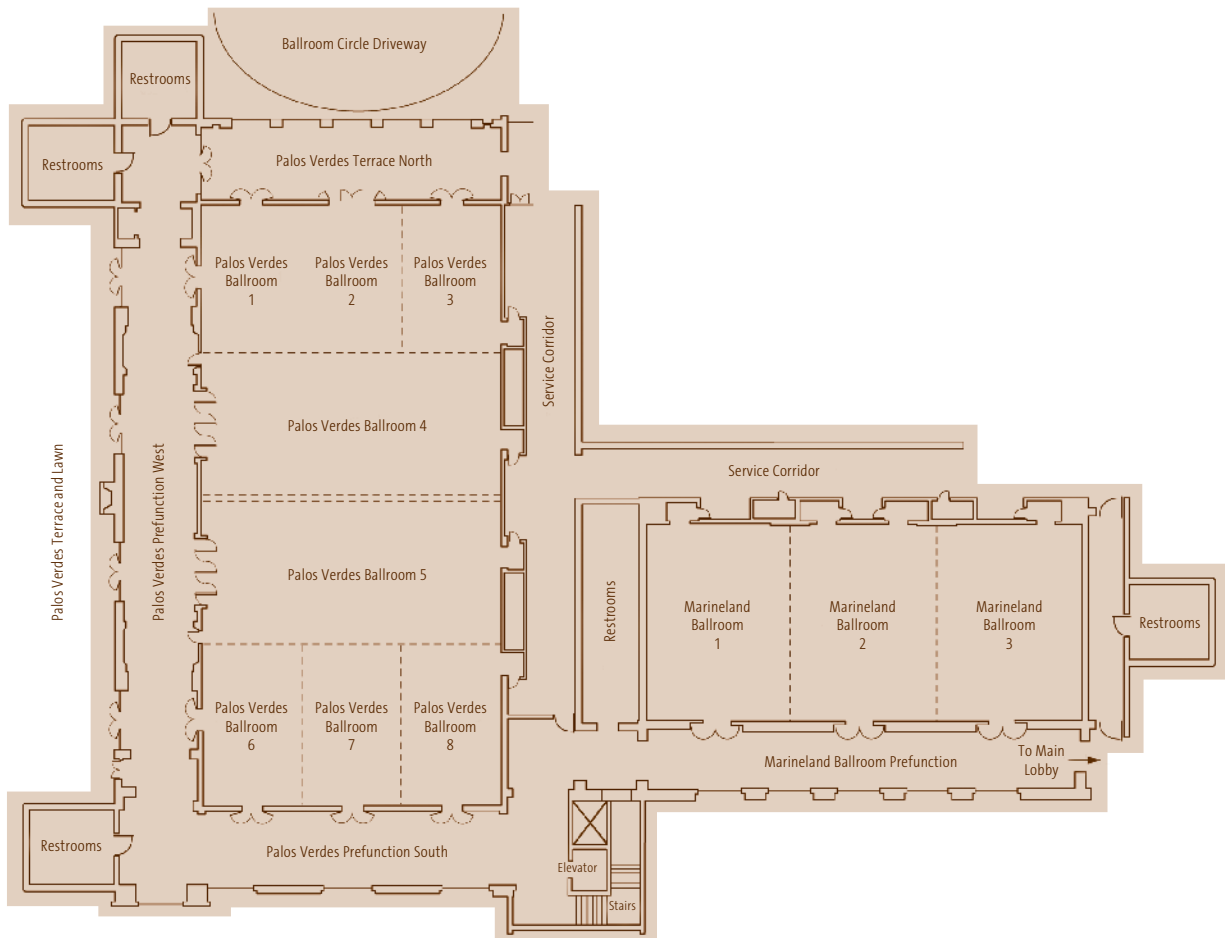
MEETING ROOM CAPACITIES

MEETING ROOMS	Total Sq. Ft.	Room Size	Ceiling Height	Classroom	Theater	Banquet 10	Reception	Conference	U-Shape	H-Square	10x10's
Abalone Cove	1,058	46'x23'	11	50	120	70	111	28	30	36	-
Abalone Cove 1	529	23'x23'	11	24	55	30	53	12	20	24	-
Abalone Cove 2	529	23'x23'	11	24	55	30	53	12	20	24	-
Catalina Ballroom	4,410	98'x45'	16	150	250	250	300	60	66	72	21
Crystal Cove	1,058	46'x23'	11	50	120	70	111	28	30	36	-
Crystal Cove 1	529	23'x23'	11	24	55	30	53	12	20	24	-
Crystal Cove 2	529	23'x23'	11	24	55	30	53	12	20	24	-
Golden Cove	713	31'x23'	11	30	40	40	74	16	20	24	-
Inspiration Point	690	30'x23'	11	24	40	40	68	14	12	24	-
Lunada Bay	480	24'x20'	11	15	30	30	45	16	9	12	-
Point Vicente	2,800	80'x35'	11	120	200	180	190	48	56	60	14
Point Vicente 1	910	35'x26'	11	40	100	60	90	18	20	24	-
Point Vicente 2	910	35'x26'	11	40	100	60	90	18	20	24	-
Point Vicente 3	910	35'x26'	11	40	100	60	90	18	20	24	-
Point Fermin	575	25'x23'	11	21	44	30	58	14	15	14	-
Point Prefunction	3,146	143'x22'	12	-	-	-	400	-	-	-	-
Rocky Point	1,320	44'x30'	11	60	100	80	137	34	36	40	-
Rocky Point 1	660	30'x22'	11	30	50	40	68	22	18	24	-
Rocky Point 2	660	30'x22'	11	30	50	40	68	22	18	24	-
White's Point	1,320	44'x30'	11	60	100	80	137	34	36	40	-
White's Point 1	660	30'x22'	11	30	50	40	68	22	18	24	-
White's Point 2	660	30'x22'	11	30	50	40	68	22	18	24	-

OUTSIDE SPACES	Total Sq. Ft. (HARD SURFACE & LAWN)	Ceiling Height		Theater	Banquet 10	Reception				
Catalina Lawn & Terrace	10,655	-	-	-	350	600	-	-	-	-
Catalina Point	1,973	-	-	230	-	-	-	-	-	-
Cielo Point Pool	3,500	-	-	-	180	250	-	-	-	-
Cottage Lawn	6,800	-	-	-	-	400	-	-	-	-
Cove Lawn & Terrace	6,825	-	10.5	-	350	500	-	-	-	-
Ocean Lawn	2,400	-	-	400	-	250	-	-	-	-
Palos Verdes Meadows	22,523	-	-	1200	900	1200	-	-	-	-
Palos Verdes Terrace	13,649	-	-	-	460	600	-	-	-	-
Point Lawn & Terrace	7,000	-	-	-	240	400	-	-	-	-
Resort Pool & Lawn	10,000	-	-	-	550	700	-	-	-	-

4TH FLOOR

BALLROOM LEVEL

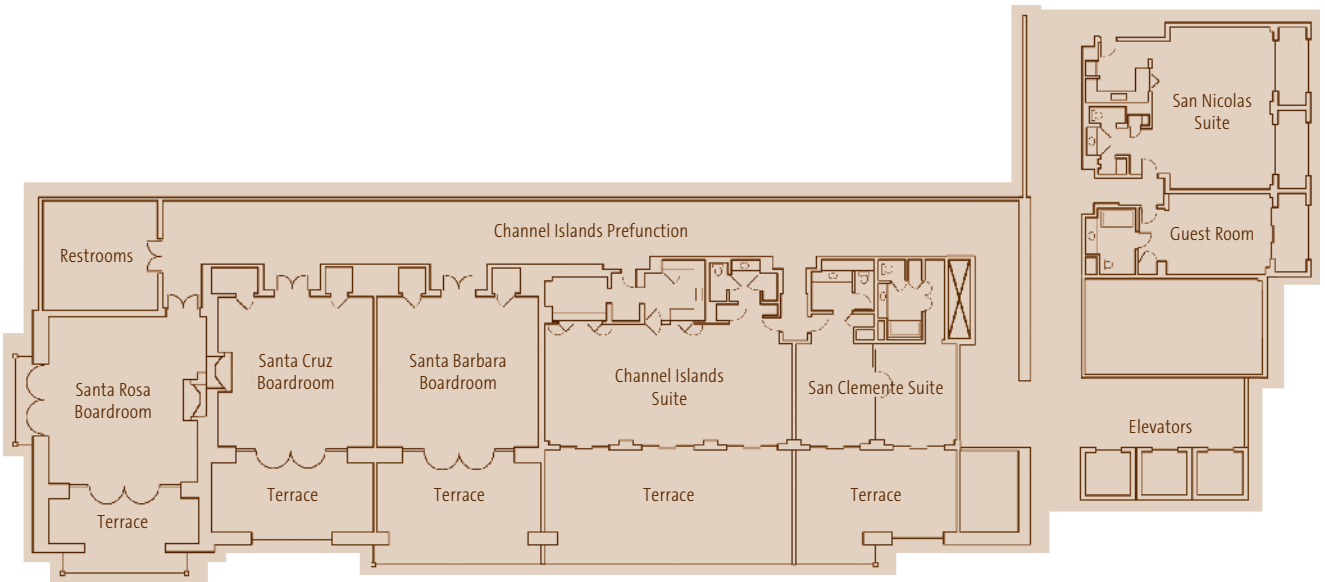


BALLROOM CAPACITIES	Total Sq. Ft.	Room Size	Ceiling Height	Classroom	Theater	Banquet 10	Reception	Conference	U-Shape	H-Square	10x10's
Palos Verdes Grand Ballroom	18,048	188'x96'	23.5	1,100	2,000	1,200	2,400	-	-	-	90
Palos Verdes Ballroom 1	1,504	47'x32'	23.5	80	140	100	158	34	40	50	7
Palos Verdes Ballroom 12	3,008	64'x47'	23.5	160	300	200	316	68	80	100	15
Palos Verdes Ballroom 123	4,512	96'x47'	23.5	258	450	280	450	90	120	140	21
Palos Verdes Ballroom 2	1,504	47'x32'	23.5	80	140	100	158	34	40	40	7
Palos Verdes Ballroom 23	3,008	64'x47'	23.5	172	300	200	200	-	-	-	15
Palos Verdes Ballroom 3	1,504	47'x32'	23.5	80	140	100	158	34	40	50	7
Palos Verdes Ballroom 4	4,512	96'x47'	23.5	258	450	280	300	-	-	-	21
Palos Verdes Ballroom 5	4,512	96'x47'	23.5	258	450	280	300	-	-	-	21
Palos Verdes Ballroom 6	1,504	47'x32'	23.5	80	140	100	158	34	40	50	7
Palos Verdes Ballroom 67	3,008	64'x47'	23.5	172	300	200	316	-	-	-	15
Palos Verdes Ballroom 678	4,512	96'x47'	23.5	258	450	280	453	-	-	-	21
Palos Verdes Ballroom 7	1,504	47'x32'	23.5	80	140	100	158	34	40	50	7
Palos Verdes Ballroom 78	3,008	64'x47'	23.5	160	300	200	316	-	-	-	15
Palos Verdes Ballroom 8	1,504	47'x32'	23.5	80	140	100	158	34	40	50	7
Palos Verdes Terrace North	2,304	96'x24'	13.5	-	-	-	242	-	-	-	-
Palos Verdes Prefunction West	4,584	191'x24'	14	-	-	-	700	-	-	-	-
Palos Verdes Prefunction South	2,256	94'x24'	12.5	-	-	-	400	-	-	-	-
Marineland Ballroom	6,608	112'x59'	18	324	711	420	640	-	-	-	32
Marineland Ballroom 1	2,183	59'x37'	18	96	200	140	221	40	45	51	10
Marineland Ballroom 2	2,183	59'x37'	18	96	200	140	221	40	45	51	10
Marineland Ballroom 3	2,183	59'x37'	18	96	200	140	221	40	45	51	10
Marineland Ballroom Prefunction	2,944	128'x23'	12.5	-	-	-	400	-	-	-	-

6TH

FLOOR

BOARDROOMS & HOSPITALITY

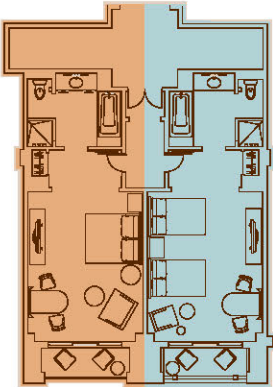


ROOM CAPACITIES	TOTAL SQ. FT.	ROOM SIZE	CEILING HEIGHT	RECEPTION	CONFERENCE	SQUARES OF 8
Santa Rosa Boardroom	780	30'x26'	11	50	14	40
Santa Cruz Boardroom	729	27'x27'	11	-	14	32
Santa Barbara Boardroom	728	28'x26'	11	-	14	32
Channel Islands Suite	1,300	44'x30'	11	70	8	-
San Clemente Suite	810	30'x27'	11	30	-	-
San Nicolas Suite	825	33'x25'	11	40	-	-

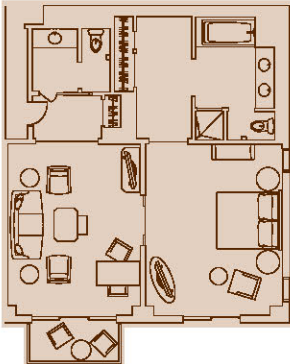


ACCOMMODATIONS

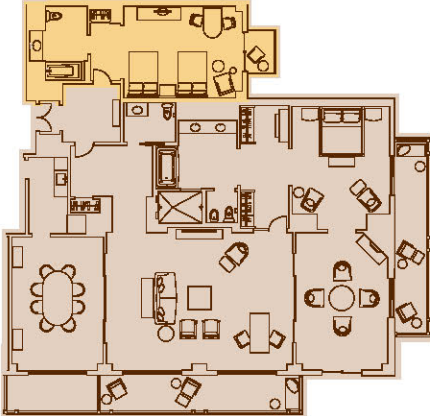
GUEST ROOMS, SUITES, BUNGALOWS, VILLAS & CASITAS



**KING/DOUBLE
GUEST ROOMS**
450 sq. ft.



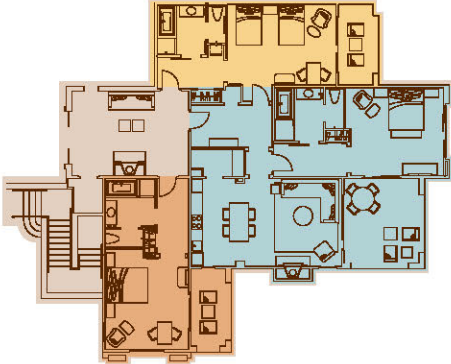
OCEAN SUITE
900 sq. ft.



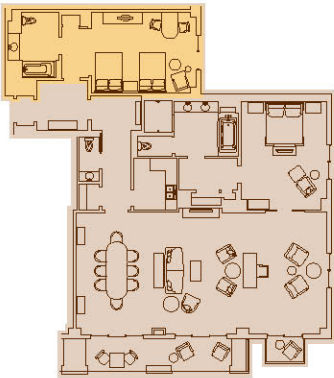
VANDERLIP SUITE
2,200 sq. ft.



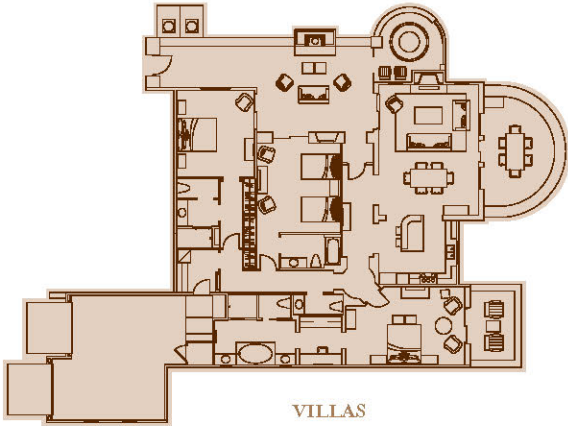
BUNGALOW
600-1,660 sq. ft.
Adults Only



CASITA
500-2,040 sq. ft.



SHEARWATER SUITE
1,800 sq. ft.



VILLAS
1,864-2,808 sq. ft.

